

Our office is closed on April Tuesday 23rd / Wednesday 24th / Monday 29th / Tuesday 30th



Home > Products > ProX Truss > Top & Base Plates > 36" Aluminum 8mm Truss Base Plate for F34 F32 F31 Conical Square Truss with Connectors

SKU: XT-BP3636A

Permalink:

[Search on Google](#)

36" Aluminum 8mm Truss Base Plate for F34 F32 F31 Conical Square Truss with Connectors

[Find A Dealer](#)

Product Images



[Download Product Images](#)

Our Products And You

[Submit your story](#)

ProX XT-BP3636A 36" Aluminum 8mm Truss Base Plate for F34 F32 F31 Conical Square Truss with Connectors

Description

ProX XT-BP3636A 36" Aluminum **8mm Truss Base Plate** for F34 F32 F31 Conical Square Truss with Connectors. This 36" x 36" Aluminum base plate is forged out of tough EN-AWT 5052 Aluminum material. Most professionals trust us for the quality and reliability of our products. Its robust build gives you all the confidence you need when combining your truss segments and or any other compatible products. Includes connecting hardware set.

We use industry-standard dimensions that are compatible with most other truss manufacturers. Our Truss segments are welded and manufactured in our own factory and are compliant with TUV Certified engineering.

TUV Is a 3rd Party Certification Body and a Nationally Recognized Testing Laboratory (NRTL). TUV provides inspections, testing, certification & training, with the ultimate objectives of reliability, safety & high quality.

Features

- **For F34/F32/F31 Conical Truss**
- **Compatible with other brands**
- **8mm Plate Thickness**
- **Material: EN-AWT6 5052**
- **Smooth Rounded Edges**

Exterior Dimensions & Weight

0.50"H x 36.00"W x 36.00"L - Weight: 39.00 lbs

Shipping Dimensions & Weight

Box 1 of 1: 3.00"H x 37.00"W x 37.00"L - Shipping Weight: 44.00 lbs

Suggested Shipping Method: Parcel

UPC

Our Products and You

Submit your story

Commonly Asked Questions

+ Where can I buy one?

[submit a question](#)

Customer Testimonials

Ordered this and it arrived on time and let me tell you, these are very nice and do not weigh nearly as much as my steel ones. Currently using to hold 60 inch TVs on 7-foot box truss and it is completely stable without the need for extra weight. This product also paired up nicely with my Global brand truss and fit like a glove. I will be buying two more and some truss to go with it!

Jonathan

[submit a testimonial](#)

Related Products



12" X 48" (1' X 4') Aluminum Base Plate for F34 Truss for Goal Post systems 8mm
SKU: XT-BP1248A



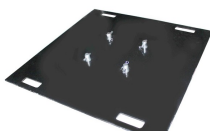
16" Aluminum 6mm Truss Base Plate for F34 F32 F31 Conical Square Truss with Connectors
SKU: XT-BP16A



24" Steel 8mm Truss Base Plate for F34 F32 F31 Conical Square Truss with Connectors Black Finish
SKU: XT-BP2424S



24" x 24" 8mm Aluminum Base Plate F34 Trussing Includes Conical Connectors
SKU: XT-BP2424A



36" Steel 10mm Truss Base Plate for F34 F32 F31 Conical Square Truss with Connectors - Black Finish
SKU: XT-BP3636S

Show More
