



Home > Products > ProX Lighting > Lasers (High Power) , KVANT® Laser Systems > KVANT ClubMAX1800 1.8W R-G-B Laser Class 4 (Variance Required)

SKU: ClubMAX1800

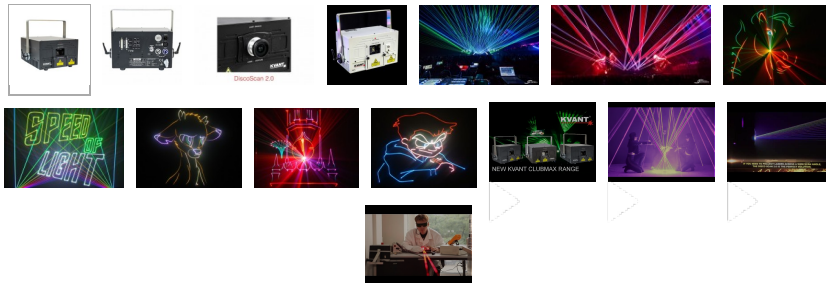
Permalink:

[Search on Google](#)

KVANT ClubMAX1800 1.8W R-G-B Laser Class 4 (Variance Required)

[Find A Dealer](#)

Product Images



[Download Product Images](#)

Our Products And You

[Submit your story](#)

ProX KVANT ClubMAX1800 1.8W R-G-B Laser Class 4 (Variance Required)

Description

The **Kvant ClubMax1800** is a cost-effective and low maintenance professional laser light show system, offering exceptional quality and value. The projector is small, and very easy to transport and mount, making it perfect for small to medium size indoor venues, as well as touring and mobile entertainment applications. (Variance Required)

The ClubMAX 1800 has a guaranteed output of 1800mw; with a stunning white balance (RED: 300mW/637nm + GREEN: 600mW/520nm + BLUE: 1W/445nm). In addition, it features all pure diode modules protected by LASORB, for brighter more vibrant colors and longer lifetimes. It also comes standard with the new ScannerMAX Compact-506 optical scanning system, for exceptionally fast scan speeds of 35K @ 8 degrees optical, with a 60 degrees maximum scan angle on both the X and Y axis, that produces stunning text, graphics, and logos, as well as wide-angle beam effects.

This laser also includes a FREE ILDA cable, E-Stop System, interlock, key-switch, and mechanical shutter. It has a protection rating of IP54 (or higher upon request) and it is fully compliant with all US CDRH/FDA regulations, as well as European and other international regulations.

The ClubMAX line of lasers was developed to offer clients exceptional value in a laser projection system, while still featuring the professional quality standards you would expect from KVANT. These systems are entirely manufactured in Europe, using only the highest quality components and build processes. You can see how these lasers are made at KVANT's factory, by [Clicking Here](#).

The KVANT pure diode modules used inside of the ClubMAX systems are custom fabricated at the KVANT factory and feature a great beam divergence (<1mrad), and beam diameter (3.5mm) while producing a nice white balance. And with full analog modulation, you can produce millions of different color combinations, as well as smooth crossfades and transitions. Because the laser diodes used inside are protected by LASORB, you also have the assurance of knowing your lasers will not be harmed from damage that can be caused by ESD or power surges.

All ClubMAX systems also come standard with the new ScannerMAX Compact-506 optical scanning system, that produces beautiful text graphics, and logos, as well as wide-angle beam effects (35K @ 8 degrees optical with an 80 degrees maximum scan angle on both the X and Y axis). ScannerMAX galvos received a 1st place ILDA Award, for their quality and performance in the industry. With the ClubMAX line of lasers, you know that you have a system capable of handling any type of content or show that you need to play.

These systems can easily be controlled via ILDA, as well as DMX or ArtNet using Pangolin's QuickShow or BEYOND software. And, they also are DiscoScan 2.0 and Safety Scan Lens compatible, with optical upgrade systems that can be purchased, making this ideal for venues where you need a single laser to cover a wide projection area or for when you need to produce audience scanning effects safely.

External control on the back of the projector also makes adjustments of colors, size, position, rotation and more, very easy to do.

In addition, these systems can have Pangolin's PASS integrated, for audience scanning compliance in the United States.

Projector Features Power output adjustment of each color, X & Y axes invert X & Y size and position, scan-fail safety mode switch, scanning system protection, a daisy chain of emergency STOP signal for multiple systems a one-hit operation. Accessories power lead, 10M ILDA signal cable, E-STOP remote with 10M cable, set of 4 safety keys, interlock connector, CD with a PDF manual.

Features

- **Output Power 1800mW**
- **Color Balance (RED: 300mW/637nm + GREEN: 600mW/520nm + BLUE: 1W/445nm) inside of a full color, pure diode, KVANT laser module KVANT**
- **Scan Speed ScannerMAX 506 Compact | 35kpps @ 8 degrees**
- **Beam Diameter 3.5mm**
- **Divergence <1mrad**
- **Modulation analog, up to 50kHz**
- **System Control ILDA (in and out), we recommend Pangolin QuickShow, BEYOND, or LD2000**
- **Power Requirements 100-230V/50Hz (A?5%)**
- **Power Consumption max. 250VA**
- **Weight 6kg**
- **Dimensions 207x255x168mm**
- **Compliance Compliant with all US CDRH/FDA requirements and EU, Asia and Inta'l Regulations**
- **PASS Certified Can be configured with Pangolina's PASS Technology, for audience scanning safety**

Exterior Dimensions & Weight

7.00"H x 10.00"W x 8.00"L - Weight: 13.00 lbs

Shipping Dimensions & Weight

Box 1 of 1: 8.00"H x 11.00"W x 9.00"L - Shipping Weight: 14.00 lbs

Suggested Shipping Method: Parcel

Our Products and You

Submit your
story

Commonly Asked Questions

+ Where can I buy one?

[submit a question](#)

Customer Testimonials

What did you think