



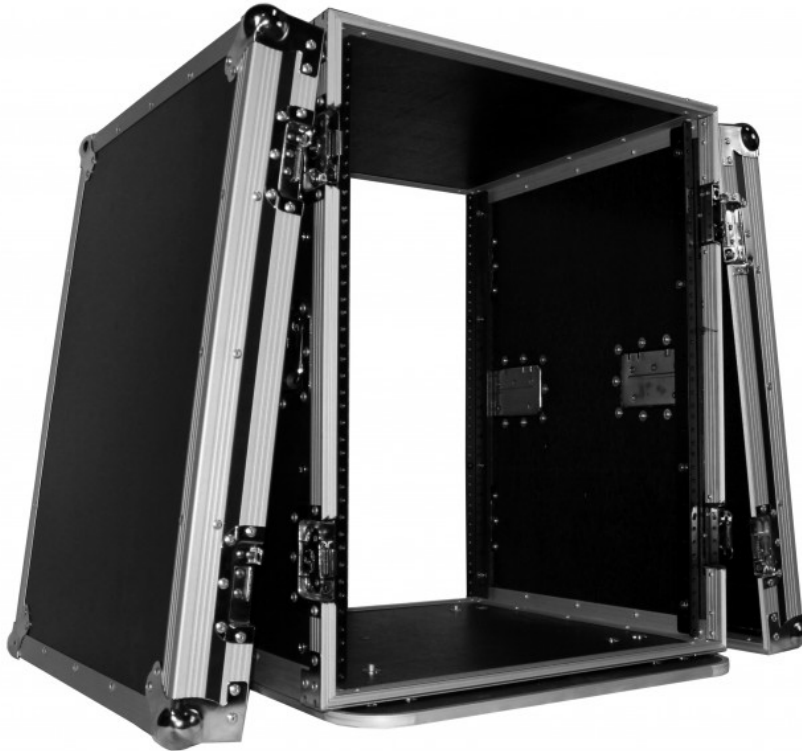
Home > Products > ProX Cases > Amp & Effects Rack Cases > > 14U Space Amp Rack Mount ATA Flight Case, 24 Inch Depth W-Casters

SKU: T-14RSS24

Permalink:

[Search on Google](#)<http://www.proxdirect.com/products/view/641>

14U Space Amp Rack Mount ATA Flight Case, 24 Inch Depth W-Casters

[Find A Dealer](#)

Product Images

[Download Product Images](#)

Our Products And You

[Submit your story](#)

ProX T-14RSS24 14U Space Amp Rack Mount ATA Flight Case, 24 Inch Depth W-Casters

Description

The **ProX T-14RSS24** 14 Space 14U vertical amplifier rack case is the perfect storage solution for convenient security for a wide variety of amplifiers, pro DJ mixers, effects and any other standard 19" rack-mountable pro audio/DJ/Network gear, and with that extra 24" Rail-to-Rail depth. Built with a heavy-duty construction design and dual mounting rails your equipment won't dislodge or slip, and strain on the rack ears will be minimized.

These professional-grade products also include external spring-loaded handles and butterfly twist latches with included padlocks for added security. As part of the ProX Signature Series line of products, the T-14RSS case is assembled with thicker 3/8" plywood for premium protection. In addition to the heavy-duty design and convenient features of the T-14RSS, this case is coated with a beautiful

black Honeycomb Digital™ finish giving you a stylish, durable, and dependable product that will last a lifetime.

This **ProX ATA 300 Style Flight Case** is manufactured with the **Honeycomb Digital™** laminated surface design on 3/8" plywood. Made with the super-sleek look of Honeycomb Digital™ hexagon grids on all shell surfaces, which gives the cases an almost alien look! Also as opposed to regular laminated plywood cases from other manufacturers, the ProX Honeycomb Digital™ design helps prevent minor to mild scratches. The Honeycomb Digital™ line design was inspired in 2009 by the design of New York City Street Manhole covers which are made to handle rough and tough everyday punishment.



All ProX cases use CNC technology, during the manufacturing process, to assure that cases are consistently built with strict specifications and tolerances that are required for the high-quality standards that ProX cases have been known for since 1984.

Features

- **14 Space Front Load Rack**
- **24" Rail to Rail Depth**
- **Standard 19" Mounting Rail Width**
- **Front and Rear Removable Lids**
- **Durable and solid rack rails with mounting hardware**
- **ATA-300 Style Gig Ready Flight Road Case**
- **Signature Honeycomb Digital™ Laminated 3/8" Plywood**
- ***High-density Foam Interior Support & Casing**
- **ProX Branded Spring Action Rubber Grip Recessed Handles**
- **Easy Locking Fit Aluminum Tongue and Groove**
- **ProX Heavy and Powerful Steel Ball Corners & Dual Anchor Rivets**
- **ProX Branded Industrial Recessed Butterfly Twist-Lock Latches - Padlock Ready**
- **2.5" Front/Rear Door Depth**
- **4 Heavy Duty 4" Casters for mobility (Two are locking)**

To Fit

Standard 19" Amp rack modules requiring more depth. This case has a 24" Rail-to-Rail depth.

Dimensions

28.00"L x 21.00"W x 27.00"H
Weight: 82.00 lbs

Shipping Dimensions

32.00"L x 24.00"D x 31.00"H
Shipping Weight: 87.00 lbs

Suggested Shipping Method: LTL

UPC

741459149031

Our Products and You

Submit your
story

Commonly Asked Questions

+ Where can I buy one?

[submit a question](#)



Customer Testimonials

What did you think

Related Products



**8U Space Amp
Rack Mount ATA
Flight Case 24 Inch
Depth**
SKU: T-8RSS24



**10U Space Rack
Mount Flight Case
24 Inch Depth W-
Casters**
SKU: T-10RSS24



**12U Space Amp
Rack Mount ATA
Flight Case 24 Inch
Depth W-Casters**
SKU: T-12RSS24



**16U Space Amp
Rack Mount ATA
Flight Case | 24"
Depth | Incl. 2x
Side Tables and
Casters**
SKU: T-
16RSS24WDST



**18U Space Amp
Rack Mount ATA
Flight Case 24 Inch
Depth W-Casters**
SKU: T-
18RSS24WDST