

Our office is closed on April Tuesday 23rd / Wednesday 24th / Monday 29th / Tuesday 30th



Home > Products > ProX Lighting > LED Lighting > , LED Strips & Ropes > LED Strips > ALCON BAR 8x 5in1 RGBWA 10W LED Light Battery Powered Wireless DMX

SKU: X-BARC8WDBX4

This product is discontinued

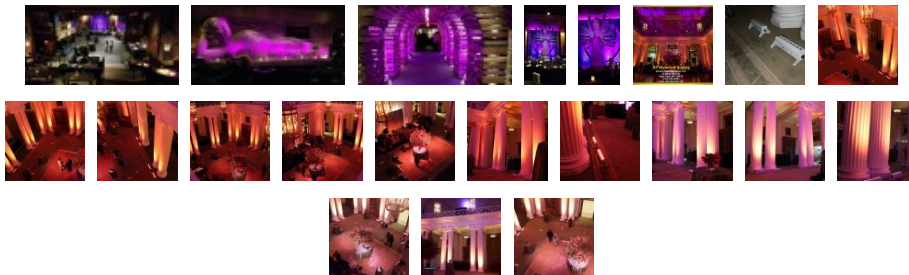
ALCON BAR 8x 5in1 RGBWA 10W LED Light Battery Powered Wireless DMX

Product Images



[Download Product Images](#)

Our Products And You



[submit your story](#)

ProX X-BARC8WDBX4 ALCON BAR 8x 5in1 RGBWA 10W LED Light Battery Powered Wireless DMX

Description

Do you need an all-inclusive compact Battery-Powered Wireless Up-Lighting package? OR add to the lighting system you already have? Well, here it is!

The **Alcon Bar X-BARC8WDBX4** XSTATIC Pro Lighting wireless DMX solution Line of LED Lighting Fixtures are sets of robust color-washing fixtures with 5 color (5in1) RGBWA 10watt LEDs that create dynamic, full RGBWA color mixes, producing up to 16 million colors and projecting light over 75 feet.

Featuring up to 20 hour battery life with wireless built in DMX. The ALCON BAR is also IR Remote controllable. Protecting this lighting package is the charging PROX ATA flight case that stores the Alcon BAR lights; and for fast and easy charging use the built in charging ports by connecting the case to wall outlet.

This advanced 5-color innovation gives users tremendous advantages over single-color LEDs, including improved color mixing, the elimination of multi-color shadows, and a much brighter, more even field. High power LEDs are rated for up to 100,000 hours and require no maintenance, saving energy and labor costs.

This ATA flight case is well sealed, and manages heat dissipation efficiently, thereby keeping the LEDs cooler. The fixtures meet the needs of lighting designers, architects and performance artists by offering an exciting new array of effect lighting possibilities. Its excellent use for corporate events, weddings, bar mitzvah/bat mitzvah, birthday, sweet sixteen, banquet hall.

Includes:

(4) ALCON RGBWA Battery Powered LED BARC8 with built in wireless DMX

- (1) IR Remote
- (1) 4 Pack Charging Road Case
- (4) 4" Locking Swivel Casters and 4 caster dishes on top for stackability
- (1) 4 foot long Case Charging Cord

Made in Sweden, Wireless Solution W-DMX product line makes large, creative, or technically complex installations possible through the wireless distribution of lighting control signals. Award winning reliability and one-button-to-go setup allow for quick installation of lighting fixtures, on-time completion of time-sensitive projects and faster, more efficient and less labor intensive load-in and load-out of rental equipment.

Wireless solution DMX is the well-known W-DMX Format factor that is used with all Alcon Series products. W-DMX is one of the best wireless DMX system in the world. High sensitivity that together with a Black Box F-1 Transceiver or equal with standard antenna give you distance up to 300 ft. in LOS (Line Of Sight) with a Peak Gain of 2dBi. All W-DMX products are approved by ETSI, FCC and are ETL and C/ETL Listed.

Features

- **Battery Powered & Wireless DMX LED Bar Fixture**
- **RGBWA color mixing**
- **4268 LUX @ 2 meter**
- **Include charge/store flight case holds 4 Alcon Bars**
- **Rechargeable Battery with up to 20 hours of battery life**
- **Internal Infrared (I.R.) Receiver**
- **Flicker Free**
- **Full pixel mapping capabilities**
- **Digital battery power indicator 0-100%**
- **Wireless control: onboard wireless DMX-512 protocol**
- **Wireless Solutions W-DMX certified 2.4Ghz**
- **receiver / transmitter for wireless DMX operation**
- **Retractable WDMX 2.4G antenna**
- **LED display for address and function setting**
- **Operation modes: DMX, Sound Active, Auto and Infrared (I.R) modes**
- **Operation menu with function buttons for**
- **DMX control mode, address assignment and fixture configuration.**
- **DMX connection: 3 pin DMX input and output connectors**
- **Control DMX channels: 1,5, 9, 13 and 40**
- **69 Built in Colors**
- **20 Built in Auto programs with adjustable speed**
- **Strobe 1-255 / Color strobe 1-255**
- **Internal temperature control**
- **User replaceable battery**
- **Ability to use fixture and charge simultaneously**
- **Battery: 12V 16.8A/h Lithium**
- **Maximum run time (at full power): up to 8hrs**
- **Maximum run time (single color): up to 20hrs**
- **Battery charge time: 6hrs in ProX custom charging road case**
- **Battery durability: over 500 charge cycles**
- **IEC input and output connectors**
- **Power Linking: 9 units @ 120 V; 17 units @ 230 V**
- **Main power auto ranging (100-240v 50/60HZ) In/Out**
- **Power and Current: 80 W, 0.7 A @ 120 V, 60 Hz**
- **Size: 22.5 W x 3.9 L x 9 H inches**
- **Designed & engineered in the USA**
- **Limited Warranty: 2 Years on LEDs, 1 Year Part,**
- **Approvals: CE - ROHS**

Suggested Shipping Method: Parcel

UPC

019372404996

Submit your
story

Commonly Asked Questions

+ Where can I buy one?

[submit a question](#)

Customer Testimonials

What did you think

Related Products



ALCON Wireless Transmit and Receive Unit
SKU: X-WSDMX



10 Ft. Balanced TRS-M Mini 1/8\" to TRS-M High Performance Audio Cable
SKU: XC-MS10
