



Home > Products > ProX Cases > Mixer Console Cases > ATA Digital Audio Mixer Flight Case for Yamaha TF5 Console with Doghouse compartment and Caster wheels

SKU: XS-YMTF5DHW

Permalink: <http://www.proxdirect.com>

[Search on Google](#)

ATA Digital Audio Mixer Flight Case for Yamaha TF5 Console with Doghouse compartment and Caster wheels

[Find A Dealer](#)

Product Images



[Download Product Images](#)

Our Products And You

Submit your
story

ProX XS-YMTF5DHW ATA Digital Audio Mixer Flight Case for Yamaha TF5 Console with Doghouse compartment and Caster wheels

Description

ProX **XS-YMTF5DHW** ATA Digital Audio Mixer **Flight Case for Yamaha TF5 Console** with Doghouse compartment and Caster wheels. Our custom-designed ATA-style road case is tailored specifically for your Live Mixer Console in the audio console industry, offering the highest level of protection and convenience for your valuable equipment.

The ATA-300 Flight Style Road Case is the ultimate choice for protecting your equipment. It features a convenient doghouse compartment for cable access and is equipped with 4 heavy-duty caster wheels, 2 of which are locking for stability. The interior is fortified with high-density foam for excellent support, and it boasts recessed spring action handles on both sides for easy transport. Built to withstand tough conditions, it includes heavy and powerful steel ball corners and dual anchor rivets, all enclosed in premium Series 3/8" plywood. The industrial recessed butterfly twist lock latches, padlock-compatible, offer additional security for your valuable gear during travel and storage.

Its robust construction features the utilization of rugged and enduring Signature Series Plywood, fortified with reinforced steel ball corners. The well-designed Doghouse enhances the case's functionality by providing discreet cable storage and accommodating small rear accessories, ensuring operational convenience.

At the forefront of case design, **Honeycomb Digital™** by ProX Live Performance Gear® showcases a sleek hexagonal pattern. This unique style combines with top-notch gear protection, thanks to a high-quality laminate that shields against scuffs and scratches.

Additionally, the case incorporates 4" Casters with rubber wheels, facilitating effortless mobility. With its intelligently engineered low front panel, the unit allows easy access to inputs, further enhancing the user experience.

Features

- **ATA-300 Flight Style Road Case**
- **Doghouse compartment for cable access**
- **4x Heavy-duty Caster wheels (2-locking)**
- **High-density foam interior support & casing**
- **Recessed spring action Handles per Side**
- **Heavy and powerful steel ball corners**
- **Dual anchor rivets**
- **Premium Series 3/8" Plywood**

- Industrial Recessed butterfly twist lock latches that can be padlocked
- ProX Limited Lifetime Warranty
- * All Foam padding made from 85% recycled materials

Interior Dimensions

(1): 8.90"H x 34.10"W x 23.60"L

Exterior Dimensions & Weight

12.00"H x 38.00"W x 37.00"L - Weight: 95.00 lbs

Shipping Dimensions & Weight

Box 1 of 1: 14.00"H x 40.00"W x 39.00"L - Shipping Weight: 106.00 lbs

Suggested Shipping Method: Parcel

UPC

019372406891

Our Products and You

Submit your
story

Commonly Asked Questions

- + Where can I buy one?
- + Does the equipment shown in the photo come with the case?

[submit a question](#)

Customer Testimonials

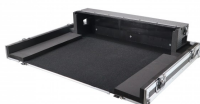
What did you think

Related Products



[ATA Digital Audio Mixer Flight Case for Yamaha TF5 Console with Wheels](#)

SKU: XS-YMTF5W



[ATA Digital Audio Mixer Flight Case for Yamaha TF5 Console with Doghouse compartment and Caster wheels](#)

SKU: XS-YMTF5DHW



[Portable Z Style Stand for Full Size Electric Piano Keyboard DJ Controller Flight Case](#)

SKU: X-ZSTN

