

**Our Offices will be closed for the holidays on the following dates:**

**Oct. 5, 10-11, and 17-18.**



Home > Products > ProX Truss > All Truss Accessories > Mounting Devices , Couplers , Spacers > F31 F32 F34 Conical Single Tube Hinge Unit

SKU: XT-HINGE

Permalink:

[Search on Google](#)

<http://www.proxdirect.com/products/view/184>

## F31 F32 F34 Conical Single Tube Hinge Unit

[Find A Dealer](#)



### Product Images



[Download Product Images](#)

### Our Products And You

[Submit your story](#)

### ProX XT-HINGE F31 F32 F34 Conical Single Tube Hinge Unit

#### Description

The **ProX XT-HINGE Single Tube Hinge Block** fits standard F31 - F32 - F34 Conical 2" Truss tubes and can make 90 deg., 120 deg. and 135 deg. corners. The hinge sets, mainly used as hinges in towers, are also usable to make various shapes with standard lengths.

Mix and combine different pipes and hinges to create unique shapes, angles, and displays. Made from high-grade 6082-T6 aluminum and securely fastened with locking pins and cotter keys, the Single Tube Hinge Block can carry the weight of most stage and lighting while giving you a one of a kind display.

**ProX** specializes in high-quality, general-purpose aluminum lighting and stage trussing designed for live stages, theaters, nightclubs, church installations, mobile applications, trade shows, and retail applications. Our products are built using 6082-T6 Aluminum Alloy compositions. This lightweight, corrosion-resistant aluminum has a very high tensile strength, giving you the support and stability you need. The ProX Truss Conical Coupling System allows for genderless trusses, providing a more precise line up of chords and fastening points, while the conical shape of the couplers helps to maintain overall rigidity at the stress points and makes parts harder to damage. This system also makes assembly quick and easy with very few tools needed to complete set up.

Comes packaged with:

- (1) Male Tube Hinge
- (1) Female Hinge
- (3) Locking Pins
- (3) Pin Clips

## Features

- **In-house ProX Manufactured Truss**
- **Built to exacting specifications**
- **TUV Certified Welding & Processes**
- **Compatible with most Conical Coupled trussing**
- **Includes tapered shear pins with clips and 2 conical coupling**



TUV is a 3rd Party Certification Body and a Nationally Recognized Testing Laboratory (NRTL). TUV provides inspections, testing, certification & training, with the ultimate objectives of reliability, safety & high quality.

## To Fit

Standard 2" Size Truss Configurations. F31, F32, F34

## Suggested Shipping Method: Parcel

## UPC

019372410768

## Our Products and You

Submit your story

## Commonly Asked Questions

+ Where can I buy one?

[submit a question](#)



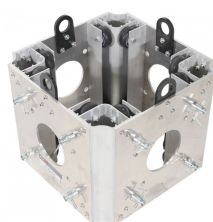
## Customer Testimonials

What did you think

## Related Products



**Top Truss Section for Electric Motor or Manual Chain Hoist**



**Ground Support Sleeve Block for F34 Truss Systems**



**3.28 Ft - 1.00 M F34 Square Truss Segment | 2 mm Wall**



**Set of 2: 1 Ton Manual Chain Hoist W/30 Ft (9 M) Chain**



**3 Ft. Outrigger Brace for Ground Support Truss**

**MOIST**  
SKU: XT-TOPCM

SKU: XT-BLOCK-1M2

**wall**  
SKU: XT-SQ328

**Chain**  
SKU: XT-MCH1TX2-  
30FT

**lower**  
SKU: XT-GSOUTS3