

Our office is closed on Monday April 29th & Tuesday April 30th for Passover



Home > Products > ProX Truss > Ground Support > , Hinges , Couplers, Spacers, and Hardware > > Pack of 4 Conical Tube Ground Support Post towers Male to Male Hinge Joint Fits F31 F32 F34

SKU: XT-HINGEX4

Permalink:

[Search on Google](#)

Pack of 4 Conical Tube Ground Support Post towers Male to Male Hinge Joint Fits F31 F32 F34

[Find A Dealer](#)

Product Images



[Download Product Images](#)

Our Products And You

Submit your
story

ProX XT-HINGEX4 Pack of 4 Conical Tube Ground Support Post towers Male to Male Hinge Joint Fits F31 F32 F34

Description

The ProX XT-HINGEX4 includes Pack of 4 Male-to-Male Tube Hinge can be used for a Ground Support Truss roof system. This hinge fits standard F31 - F32 - F34 Conical 2" Truss. The hinge sets, mainly used as hinges in towers, are also used to make various shapes with standard lengths. Mix and combine different pipes and hinges to create unique shapes, angles, and displays. Made from high-grade 6082-T6 aluminum and securely fastened with locking pins and cotter keys, the Single Tube Hinge Block can carry the weight of most stage and lighting while giving you a one of a kind display.

ProX specializes in high-quality, general-purpose aluminum lighting and stage trussing designed for live stages, theaters, nightclubs, church installations, mobile applications, trade shows, and retail applications. Our products are built using 6082-T6 Aluminum Alloy compositions. This lightweight, corrosion-resistant aluminum has a very high tensile strength, giving you the support and stability you need. The ProX Truss Conical Coupling System allows for genderless trusses, providing a more precise line up of chords and fastening points, while the conical shape of the couplers helps to maintain overall rigidity at the stress points and makes parts harder to damage. This system also makes assembly quick and easy with very few tools needed to complete set up.

Features

Each XT-Hinge includes:

- **(1) Male to Male Hinge adjustable angel joint**
- **(2) Locking Pins**
- **(2) Pin Clips**
- **Built to exacting specifications**
- **Compatible with most Conical trussing**

Package Contents

- **XT-HINGE** (4) Conical Tube Ground Support Post towers Male (to Male Hinge Joint Fits F31 F32 F34

Shipping Dimensions & Weight

Shipping Dimensions & weight

Box 1 of 1: XT-HINGE (4 boxes) 2.00"H x 5.00"W x 5.00"L - Shipping Weight: 2.50 lbs

Suggested Shipping Method: Parcel

UPC

804589616498

Our Products and You

Submit your story

Commonly Asked Questions

+ Where can I buy one?

[submit a question](#)

Customer Testimonials

What did you think

Related Products

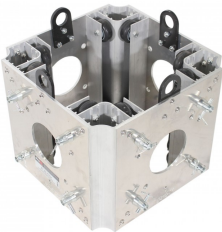
3.28 Ft - 1.00 M F34 Square Truss Segment | 2 mm Wall

SKU: XT-SQ328



Ground Support Sleeve Block for F34 Truss Segment Systems

SKU: XT-BLOCK-MK2



Top Truss Section for Electric Motor or Manual Chain Hoist

SKU: XT-TOPCM



Universal Vertical Tower Truss Ground Support Base on Wheels with Leveling Jacks for F34, F44 and 12" Bolt truss

SKU: XT-GSB MK3



3.28 Foot - 1M F31 Single Tube Truss Segment | 2mm Wall

SKU: XT-S328



