



Home > Products > ProX Truss > Chain Hoist and Sling Suspension > Pair 1 Ton Manual Chain Hoist with 30 Ft (9 M) Chain for Stage Truss roof system and line array speakers

SKU: XT-MCH1TX2-30FT

Permalink:

[Search on Google](#)

Pair 1 Ton Manual Chain Hoist with 30 Ft (9 M) Chain for Stage Truss roof system and line array speakers

Product Images

[Find A Dealer](#)



[Download Product Images](#)

ProX XT-MCH1TX2-30FT Pair 1 Ton Manual Chain Hoist with 30 Ft (9 M) Chain for Stage Truss roof system and line array speakers

Description

Set of 2 Manual Chain Hoist. No electricity is needed, just manual labor.

Each Chain is rated for 1-ton capacity load bearing.

Included are a chain bag for each chain hoist and a Heavy Duty case for both hoists.

Ideal for Stage, truss, and mobile stage.

Note: All new models do not come with the interior foam.

Features

- **Portable, lightweight hoist is durable and easy to operate**
- **Full-forged drop steel swivel hooks with safety latch for a secure lift**
- **Compact design and low headroom**
- **Mechanical load brake for positive load control when lifting or spotting**
- **Rugged hardened steel construction**
- **Galvanized Grade 80 chain**
- **Chain bag holds 30ft of chain**
- **Forged steel hooks swivel 360° and have safety latches**
- **Designed with a safety factor 4 times rated capacity**
- **Meets ANSI/ASME standards**
- **Lifting Capacity 1000 kgs**
- **Pulling force (N) 305**
- **Diameter of lifting chain 6X18 (mm)**
- **Diameter of pulling chain 5X25 (mm)**

Shipping Dimensions & Weight

Box 1 of 1: 11.00"H x 19.00"W x 15.00"L - Shipping Weight: 104.00 lbs

Suggested Shipping Method: Parcel

UPC

019372406945

Our Products and You

Submit Your Story

Customer Testimonials

What Did You
Think

Commonly Asked Questions

How do I get rid of rust from Chain Hoist? To get rid of Mobil 220 chain and lift for 5 minutes continuously. If it's not too much rust use Mobil 150 oil, and do the same procedure

[Submit A Question](#)

Related Products

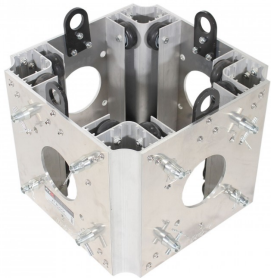
[Top Truss Section for Electric Motor or Manual Chain Hoist](#)

SKU: XT-TOPCM



[Ground Support Sleeve Block for F34 Truss Segment Systems](#)

SKU: XT-BLOCK-MK2



[9.84 Ft - 3.00 M F34 Square Truss Segment | 2 mm Wall](#)

SKU: XT-SQ984



[30" Aluminum 8mm Truss Base Plate for F34 F32 F31 Conical Square Truss with Connectors](#)

SKU: XT-BP3030A



