



Home > Products > ProX Cases > Mixer Console Cases > ProX Mixer Case W/Wheels for Allen and Heath QU-32

SKU: XS-AHQU32W

Permalink:

[Search on Google](#)

<http://www.proxdirect.com/products/view/671>

ProX Mixer Case W/Wheels for Allen and Heath QU-32

[Find A Dealer](#)



Product Images



[Download Product Images](#)

Our Products And You

[Submit your story](#)

ProX XS-AHQU32W ProX Mixer Case W/Wheels for Allen and Heath QU-32

Description

This **ProX XS-AHQU32W** Professional quality ATA road case is custom designed to fit the **Allen and Heath QU-32** Digital 32 Channel Mixer, and it does the job well.

The XS-AHQU32W case is constructed with a rugged and durable Signature Series Plywood, reinforced **steel ball corners**, durable **rubber wheels** for smooth transport, as well as recessed **steel padded handles and latches**. There is additional space for cables and small accessories in the back of the unit for convenience, as well as a low front panel so you can access your inputs easily.

This ProX "Honeycomb Digital" flight case is made with the super-sleek look of hexagon grids on all shell surfaces, and it gives this case an almost alien look! It weighs 46 lbs.

an almost alien look! It weighs 46 lbs.

* ProX Goes Green: The durable hard rubber foams used in our cases contain 70% recycled content. Of that 70%, 80% of it comes from recycled plastic bottles and the remaining 20% from recycled post-industrial material. At ProX we strive to make the world a better place!

Features

- ProX has been manufacturing flight cases since 1984 and this case is designed to protect your investment
- Standard Style, Silver trim on Black Digital Honeycomb exterior design
- ATA-300 Style Gig Ready Flight Road Case
- Signature Series Certified Laminated Gig ready 3/8" plywood
- High-density foam interior support & casing
- Recessed Spring-action recessed handles
- Industrial Heavy duty and powerful steel ball corners
- 2x Low Profile Durable Tough Rubber Wheels
- Dual anchor rivets
- Easy locking fit aluminum tongue and groove
- Industrial Recessed butterfly twist-lock latches
- Industrial Grade Rubber Feet
- All Foam padding made from 85% recycled materials
- ProX Limited Lifetime Warranty

To Fit

Allen and Heath QU-32 Digital 32 Channel Mixer

Dimensions

25.25"L x 36.25"W x 11.00"H

Weight: 46.00 lbs

Shipping Dimensions

28.50"L x 39.50"D x 13.50"H

Shipping Weight: 55.00 lbs

Suggested Shipping Method: Parcel

UPC

019372405382

Our Products and You

Submit your
story

Commonly Asked Questions

+ Where can I buy one?

+ Does the equipment shown in the photo come with the case?

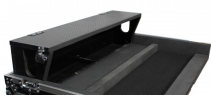
[submit a question](#)



Customer Testimonials

What did you think

Related Products





**Flight Case for
Allen & Heath QU-
32 Digital Mixer
with Doghouse &
Wheels**
SKU: XS-
AHQU32DHW



**Flight-Road Case
for Allen and Heath
QU-24 Mixer W-
Doghouse and
Wheels**
SKU: XS-
AHQU24DHW



**Fits Allen & Heath
QU-24 Digital Mixer
Console Flight
Case**
SKU: XS-AHQU24



**ProX Mixer Case
designed To Fit
Allen and Heath
QU-16**
SKU: XS-AHQU16

Image Coming Soon

**ProX fits PreSonus
STUDIOLIVE
16.4.2. Mixer Case
with Doghouse
and Wheels**
SKU: XS-PRE16DHW