

Our office is closed on Monday April 29th & Tuesday April 30th for Passover

Home > Products > ProX Truss > F34 Conical Segments 2mm > Cross, Corner & T > Square Truss Corner 2 Way 90 Degree Angle - 1.64 ft.

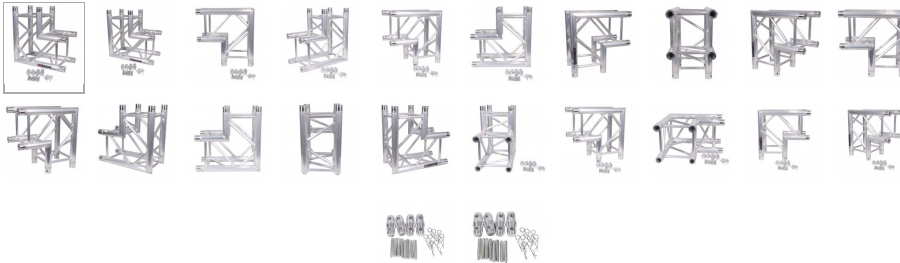
SKU: XT-SQ1642W90

Permalink: [Search on Google](#)

Square Truss Corner 2 Way 90 Degree Angle - 1.64 ft.

[Find A Dealer](#)

Product Images

[Download Product Images](#)

Our Products And You

[Submit your story](#)

ProX XT-SQ1642W90 Square Truss Corner 2 Way 90 Degree Angle - 1.64 ft.

Description

ProX **XT-SQ1642W90 Square Truss Corner 2-Way 90 Degree Angle** - 1.64 ft. The ProX XT-SQ164-2W90 2-way 90° Corner, (0.5 meters), truss corner helps you easily make squares or rectangles and works with the ProX **XT Series** box truss. ProX Truss has the most trusted staging support systems in the industry, and is built to the highest standards of safety and performance. It's a rugged yet lightweight trussing solution perfect for mobile DJs, bands, outdoor performances, nightclubs, live mobile productions, or permanent installations.

At the heart of the system is a square truss that utilizes a standard conical connector system, which easily mates with other brands of truss of the same size and connector style, and is available in a variety of lengths to suit your designs. It also works with different types of corners, base plates, connectors, and accessories that add stability while expanding on limitless configurations.

Always know your load weight for your equipment: **[VERY IMPORTANT - CLICK HERE for Truss Loading Chart.](#)**

- **Tolerance Free Standard Conical connector**
- **Main tube wall thickness of .08in**
- **Includes connecting hardware set.**

XT-SQ SERIES DIMENSIONS:

- Height: 11.42in / 290mm
- Width: 11.42in / 290mm
- Weight: 21lb per 3.28 ft / 9,5kg per meter
- Main Tube: 2in / 50mm
- Wall Thickness: .08in / 2mm
- Braces: .75in / 20mm

ProX Truss products utilize industry-standard dimensions to be compatible to connect to/with many other manufacturers trussing.

Features

- We own the factory, not generic trussing!
 - Built to exacting specifications
 - TUV Certified Welding & Processes
 - Compatible with most Conical Coupled trussing
 - Includes tapered shear pins with clips and 4 conical couplings
-

Exterior Dimensions & Weight

11.42"H x 19.68"W x 19.68"L - Weight: 15.00 lbs

Shipping Dimensions & Weight

Box 1 of 1: 14.00"H x 22.00"W x 22.00"L - Shipping Weight: 16.00 lbs

Suggested Shipping Method: Parcel

UPC

741459147389

Our Products and You

Submit your story

Commonly Asked Questions

+ Where can I buy one?

[submit a question](#)

Customer Testimonials

What did you think

Related Products



[1.64 3-Way 90 Degree Corner Section T-Section for F34 Conical Truss Segments](#)

SKU: XT-SQ164-3WT



[Square Truss Corner 2 Way 90 Degree Round](#)

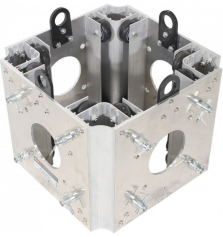
SKU: XT-SQ164-2W90-RC



6 Way Square Truss Junction Block - Includes 2 Way 8 Half Conical Couplers
SKU: XT-JB6W-2W



6 Way Square Truss Junction Block - Includes 4 Way 16 Half Conical Couplers
SKU: XT-JB6W-4W



Ground Support Sleeve Block for F34 Truss Segment Systems
SKU: XT-BLOCK-MK2
