



Universal TV/Monitor Mounting Instructions For ProX Compatible Products

We'll Make It Stress-Free

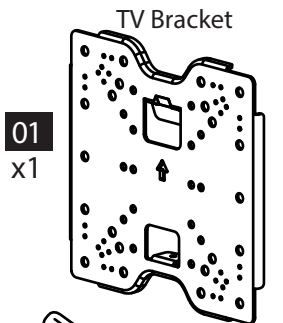
If you have any questions along the way, just give us a call.
(718) 237-2299 or info@proxcases.com We're ready to help!

STEP 1 Attach Bracket to TV

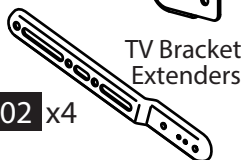
Parts and Hardware for STEP 1

⚠ WARNING: This product contains small items that could be a choking hazard if swallowed. Before starting assembly, verify all parts are included and undamaged. If any parts are missing or damaged, do not return the damaged item to your dealer; contact Customer Service. Never use damaged parts!

📄 NOTE: Not all hardware included will be used.

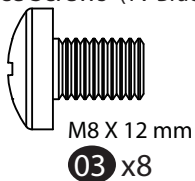


01
x1



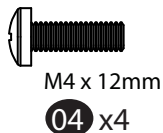
02 x4

Interface Screws (TV Bracket)

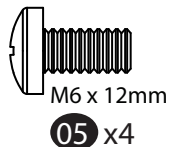


03 x8

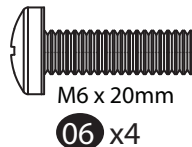
TV Screws



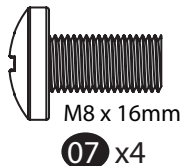
04 x4



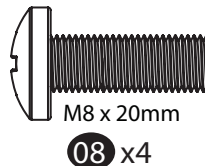
05 x4



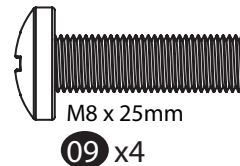
06 x4



07 x4



08 x4



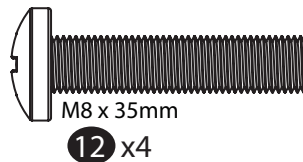
09 x4



10 x4

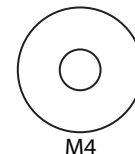


11 x4

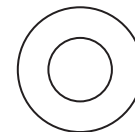


12 x4

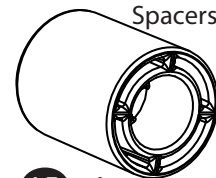
Washers



13 x4



14 x4



15 x4

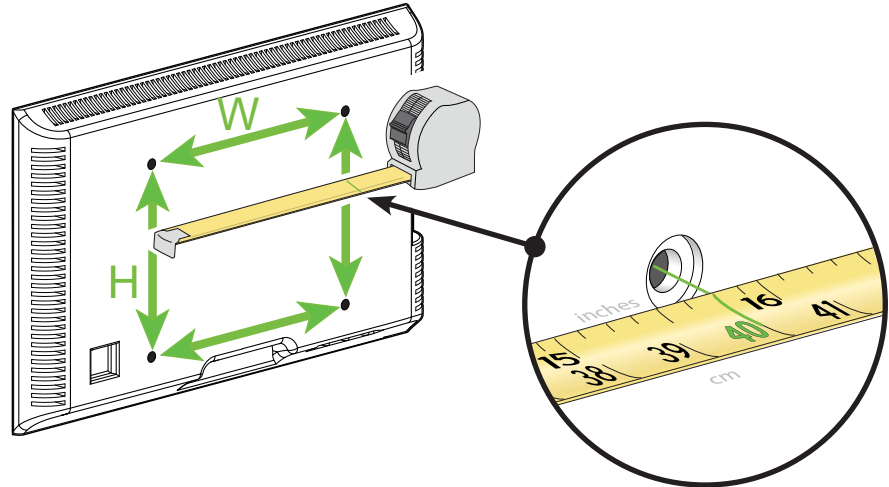
1.1 Measure Your TV Hole Pattern

Measure the width and height of your TV hole pattern in mm. Record your measurements for STEP 1.2.

Width _____ mm X Height _____ mm

- 75 mm = 7.5 cm \approx 3 in.
- 100 mm = 10 cm \approx 4 in.
- 200 mm = 20 cm \approx 7 7/8 in.
- 300 mm = 30 cm \approx 11 3/4 in.
- 400 mm = 40 cm \approx 15 3/4 in.
- 600 mm = 60 cm \approx 23 5/8 in.

Inch dimensions are approximate



1.2 Assemble Your TV Bracket

Based on your TV hole pattern measurements from STEP 1.1 (*W mm x H mm*), determine your TV bracket configuration: A, B, C, D, E or F.

A in.
[mm]

75 x 75 mm
100 x 100 mm
200 X 200 mm

These smaller hole patterns only use TV bracket **01**. Do not use the four TV bracket extenders **02** and eight screws **03**.

B in.
[mm]

300 x 300 mm
400 x 400 mm

Assemble TV bracket extenders **02** onto TV bracket **01** and secure using eight screws **03** in the corner holes indicated.

C in.
[mm]

400 x 300 mm

Assemble TV bracket extenders **02** onto TV bracket **01** and secure using eight screws **03** in the corner holes indicated.

D in.
[mm]

600 x 400 mm

Assemble TV bracket extenders **02** onto TV bracket **01** and secure using eight screws **03** in the corner holes indicated.

E in.
[mm]

400 x 200 mm

Assemble TV bracket extenders **02** onto TV bracket **01** and secure using eight screws **03** in the corner holes indicated.

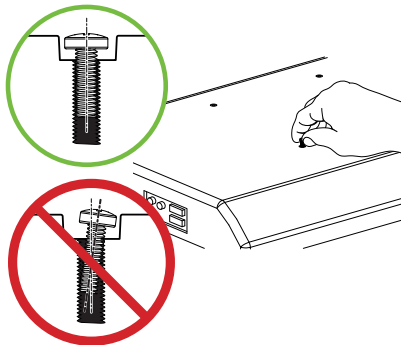
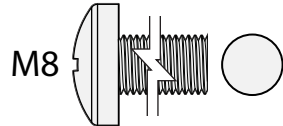
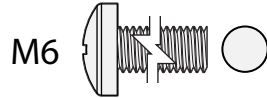
F in.
[mm]

200 x 400 mm

Assemble TV bracket extenders **02** onto TV bracket **01** and secure using eight screws **03** in the corner holes indicated.

1.3 TV Screw Diameter

Hand thread screws into the threaded inserts on the back of your TV to determine which screw diameter (M4, M6, or M8) to use.

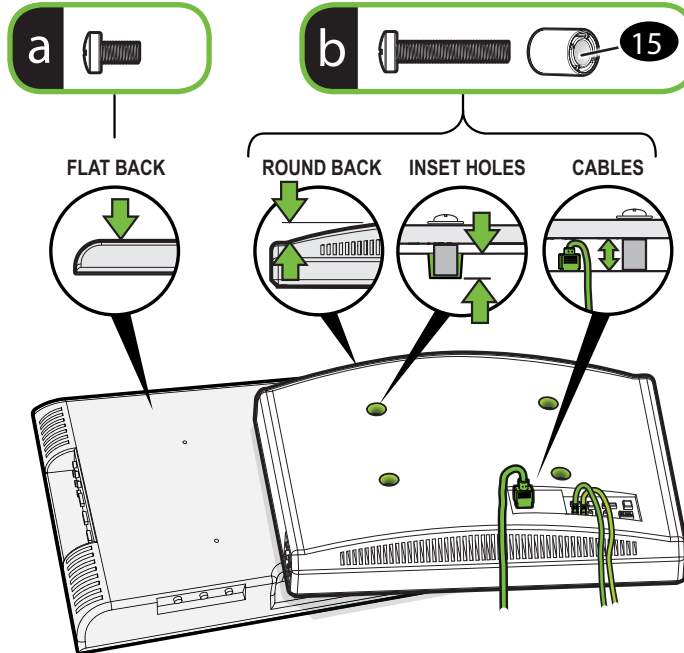


1.4 TV Screw Length

a: If your TV has a flat back AND you want your TV closer to the wall, use the shorter screws.

b: Spacers and longer screws are supplied to accommodate:

- Round (irregular) back TVs
- TVs with inset mounting holes
- Extra space needed for cables



? If your TV included inset spacers or wall mount adapters, see Troubleshooting on

⚠ CAUTION:
Verify adequate thread engagement with the screw or screw/spacer combination.

- Too short will not hold the TV.
- Too long will damage the TV.

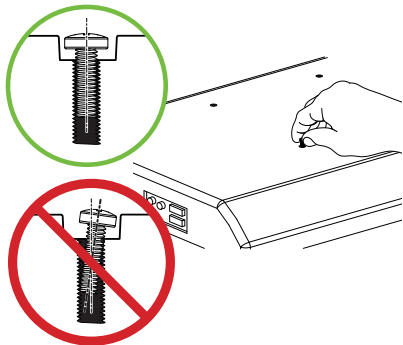
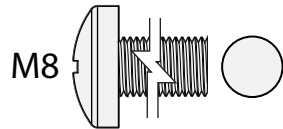
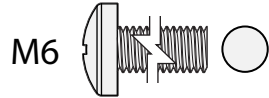
⚠ Too Short

Correct

⚠ Too Long

1.3 TV Screw Diameter

Hand thread screws into the threaded inserts on the back of your TV to determine which screw diameter (M4, M6, or M8) to use.

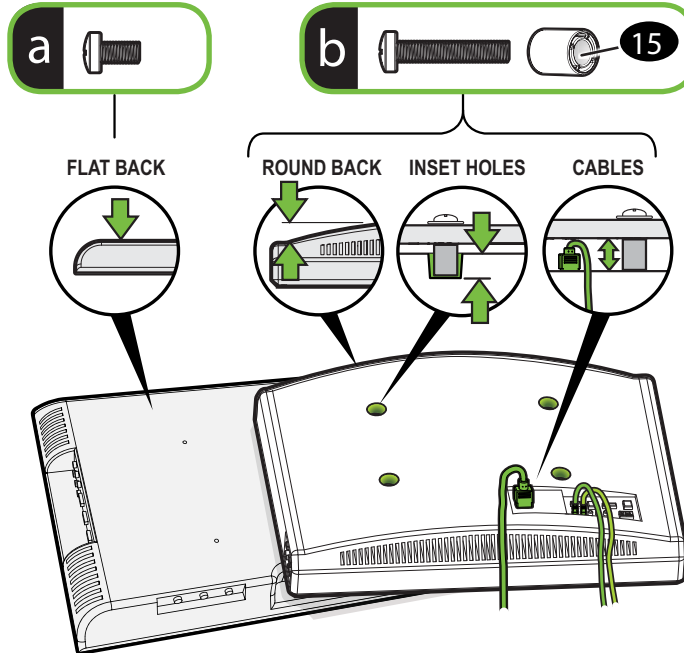


1.4 TV Screw Length

a: If your TV has a flat back AND you want your TV closer to the wall, use the shorter screws.

b: Spacers and longer screws are supplied to accommodate:

- Round (irregular) back TVs
- TVs with inset mounting holes
- Extra space needed for cables



⚠ CAUTION:

Verify adequate thread engagement with the screw or screw/spacer combination.

- Too short will not hold the TV.
- Too long will damage the TV.

